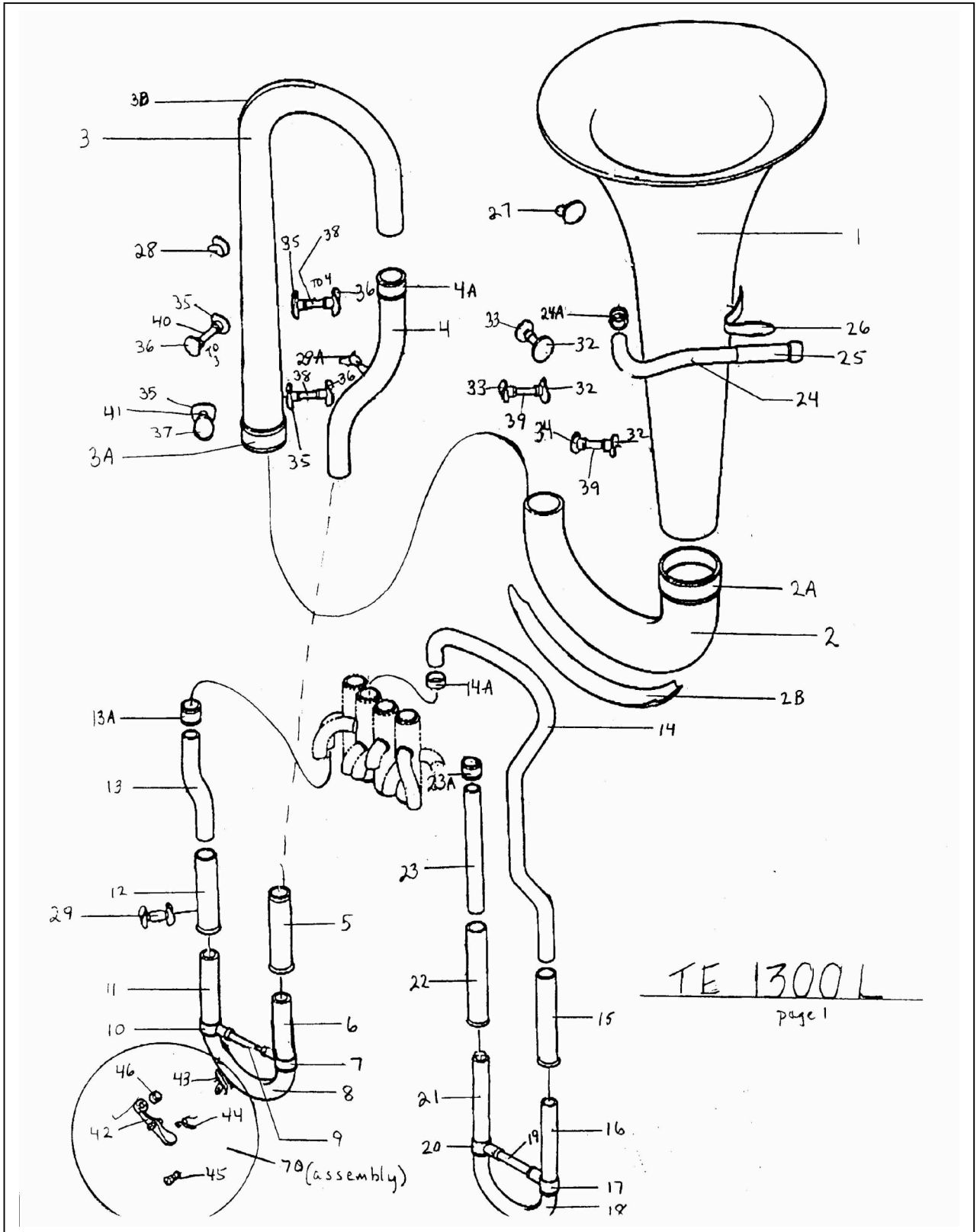
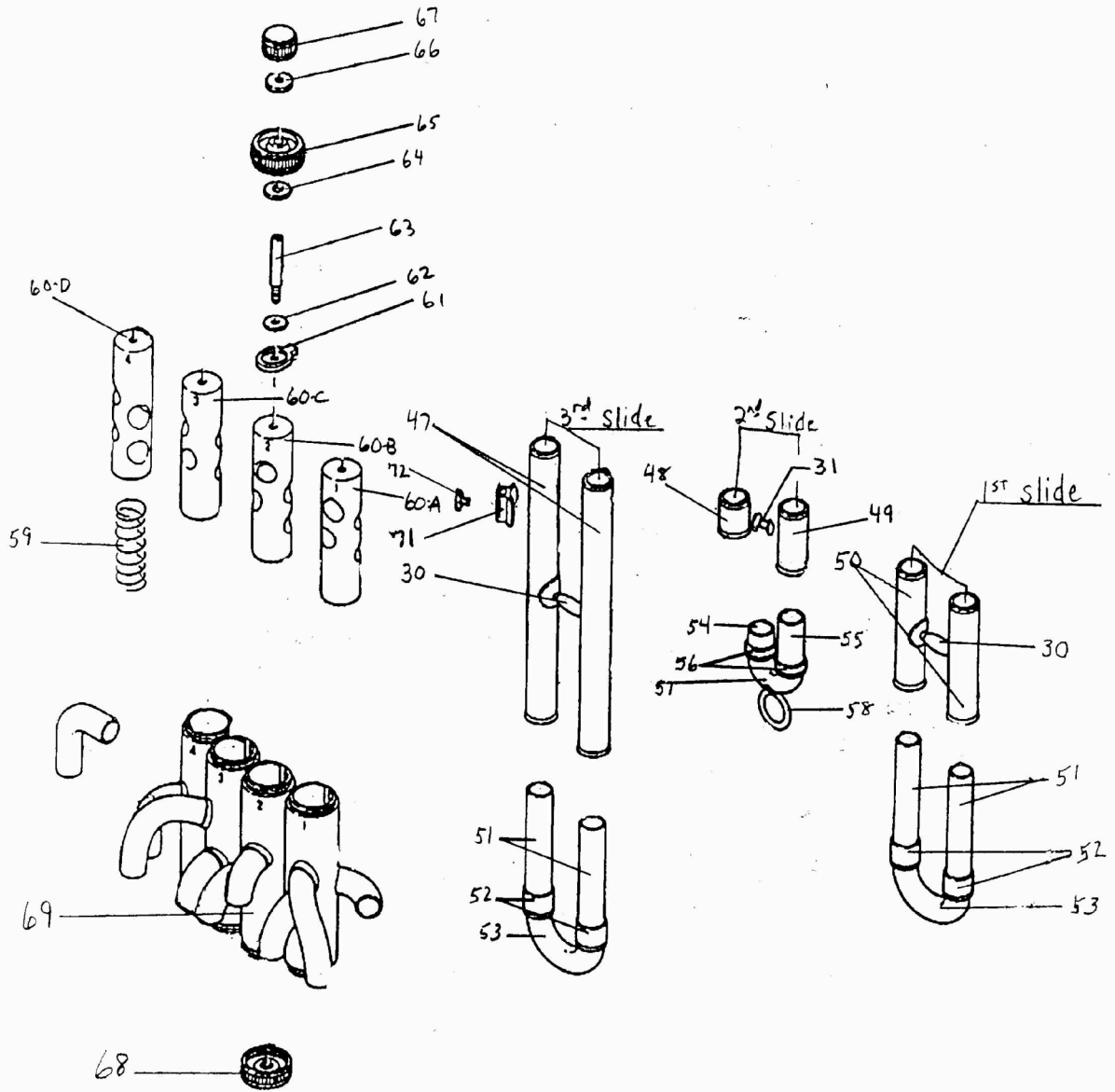


The Tuba Exchange
TE1300L Euphonium
4 valve, non-compensating



TE 1300 L

pg. 2



Diag. Page	Part #	Description
1	1300-1	Bell
1	1300-2	Bottom Bow
1	1300-2A	Ferrule, Bell to Bottom Bow
1	1300-2B	Bottom Bow Guard
1	1300-3	1st Branch
1	1300-3A	Ferrule, Bottom Bow to 1st Br.
1	1300-3B	Guard Wire, 1st Branch
1	1300-4	"S" Branch, Lg. Side
1	1300-4A	Ferrule, 1st Br. To "S" Tubing
1	1300-5	Main T. Sl. Outer Tube, Lg.
1	1300-6	Main T. Sl. Inner Tube, Lg.
1	1300-7	Ferrule and Socket, T. Sl. Lg.
1	1300-8	Main T.Sl. Crook
1	1300-9	Main T. Sl. Brace Rod
1	1300-10	Ferrule and Socket, T. Sl. Sm.
1	1300-11	Main T. Sl. Inner Tube, Sm.
1	1300-12	Main T.Sl. Outer Tube, Sm.
1	1300-13	"S" Branch, Sm. Side
1	1300-13A	Ferrule, T. Sl. To "S" Branch
1	1300-14	4th Valve Tubing, Multi-bend
1	1300-14A	Ferrule. 4th Valve Casing to 4th Valve Tubing
1	1300-15	4th T. Sl. Outer Tube, Short
1	1300-16	4th T. Sl. Inner, Short
1	1300-17	Ferrule and Socket, 4th T. Sl. Short
1	1300-18	4th Slide Crook
1	1300-19	4th T. Sl. Brace Rod (Same as #9)
1	1300-20	Ferrule and Socket, 4th T. Sl Long (same as #17)
1	1300-21	4th T. Sl. Inner Tube, Long
1	1300-22	4th T. Sl. Outer Tube, Long
1	1300-23	4th Valve Tubing, Straight
1	1300-23A	Ferrule, 4th Tubing to 4th Valve
1	1300-24	Mouthpipe
1	1300-24A	Ferrule, Mouthpipe to 1st Valve
1	1300-25	Mouthpiece Receiver
1	1300-26	Brace, Receiver to Bell
1	1300-27	Brace, 1 Piece, Bell to 1st Branch
1	1300-28	Brace, 1 piece, 1st Branch to "S" Tube Ferrule
1	1300-29	Brace, 1 piece, Main T. Sl. To 3rd Sl.
1	1300-29A	Brace, 1 piece, 4th Tubing to Lg. "S" Branch
2	1300-30	Brace, 1 Piece, bet. 1st Outer AND 3rd Outer Slide Tubes
2	1300-31	Brace, 1 piece, bet. 2nd outer Slide Tubes
1	1300-32	Brace Socket, for Bell
1	1300-33	Brace Socket, for Slide Tubing
1	1300-34	Brace Socket, for T. Sl. Lg Side (use #35)
1	1300-35	Brace Socket, for 1st Branch
1	1300-36	Brace Socket, for Slide Tubing (use #33)
1	1300-37	Brace Socket, for T. Sl. Small Side

Diag. Page	Part #	Description
1	1300-38	Brace Rod, 1st Branch to 4th Tubing
1	1300-39	Brace Rod, Bell Braces (use # 38)
1	1300-40	Brace Rod, 1st Branch to 3rd Tubing (use #38)
1	1300-41	Brace Rod, 1st Branch to Main T. Sl. Small Side (use #38)
1	1300-42	Water Key
1	1300-43	Water Key Saddle
1	1300-44	Water Key Spring
1	1300-45	Water Key Screw
1	1300-46	Water Key Cork
2	1300-47	3rd Slide Outer Tubes
2	1300-48	2nd Sl. Outer Tube, Short
2	1300-49	2nd Sl. Outer Tube, Long
2	1300-50	1st Slide Outer Tubes
2	1300-51	1st and 3rd Slide, Inner Tubes
2	1300-52	Ferrules, 1st and 3rd Slides
2	1300-53	Crook, 1st and 3rd Slides
2	1300-54	2nd Slide Tube, inner, Short
2	1300-55	2nd Slide Tube, Inner, Long
2	1300-56	Ferrules, 2nd Slide
2	1300-57	Crook, 2nd Slide
2	1300-58	Pull Ring, 2nd Slide
2	1300-59	Valve Spring, All Valves
2	1300-60A	1st Piston
2	1300-60B	2nd Piston
2	1300-60C	3rd Piston
2	1300-60D	4th Piston
2	1300-61	Valve Guide
2	1300-62	Valve Guide Metal Washer
2	1300-63	Piston Stem
2	1300-64	Stem Felt
2	1300-65	Top Valve Cap
2	1300-66	Finger Button Felt
2	1300-67	Finger Button
2	1300-68	Bottom Valve Cap
2	1300-69	Valve Cluster
2	1300-70	Water Key Assembly - includes #42,43,44,45,46
2	1300-71	Lyre Holder
2	1300-72	Lyre Holder Screw